



ABOUT US

This new Belgian company hosts an inspiring and dedicated team, showing unwavering ambitions to become your preferred partner in securing environments.

ZEALOUSLY SECURING ENVIRONMENTS

Our motto, 'Zealously Securing Environments', embodies our eagerness and commitment to providing top-notch security solutions while incorporating the company's focus on protecting and defending society, its norms and values.

OUR EXPERTISE & PRODUCTS

Our expertise lies in delivering robust support for drone and counter-drone operations, serving both civil and military purposes.

Our products feature cutting-edge technologies, making us the premiere destination for state-of-the-art, high-tech solutions in the field of securing and protecting environments, including sensitive locations, critical infrastructure, events, citizens, and military personnel.



Based in the heart of Flanders, Belgium, our headquarters are strategically located at the regional airport of Brustem (Sint-Truiden), purpose-built as a **Droneport** in the province of Limburg. This prime setting allows us to conduct meticulous tests & trials, ensuring our products consistently maintain peak performance and reliability.

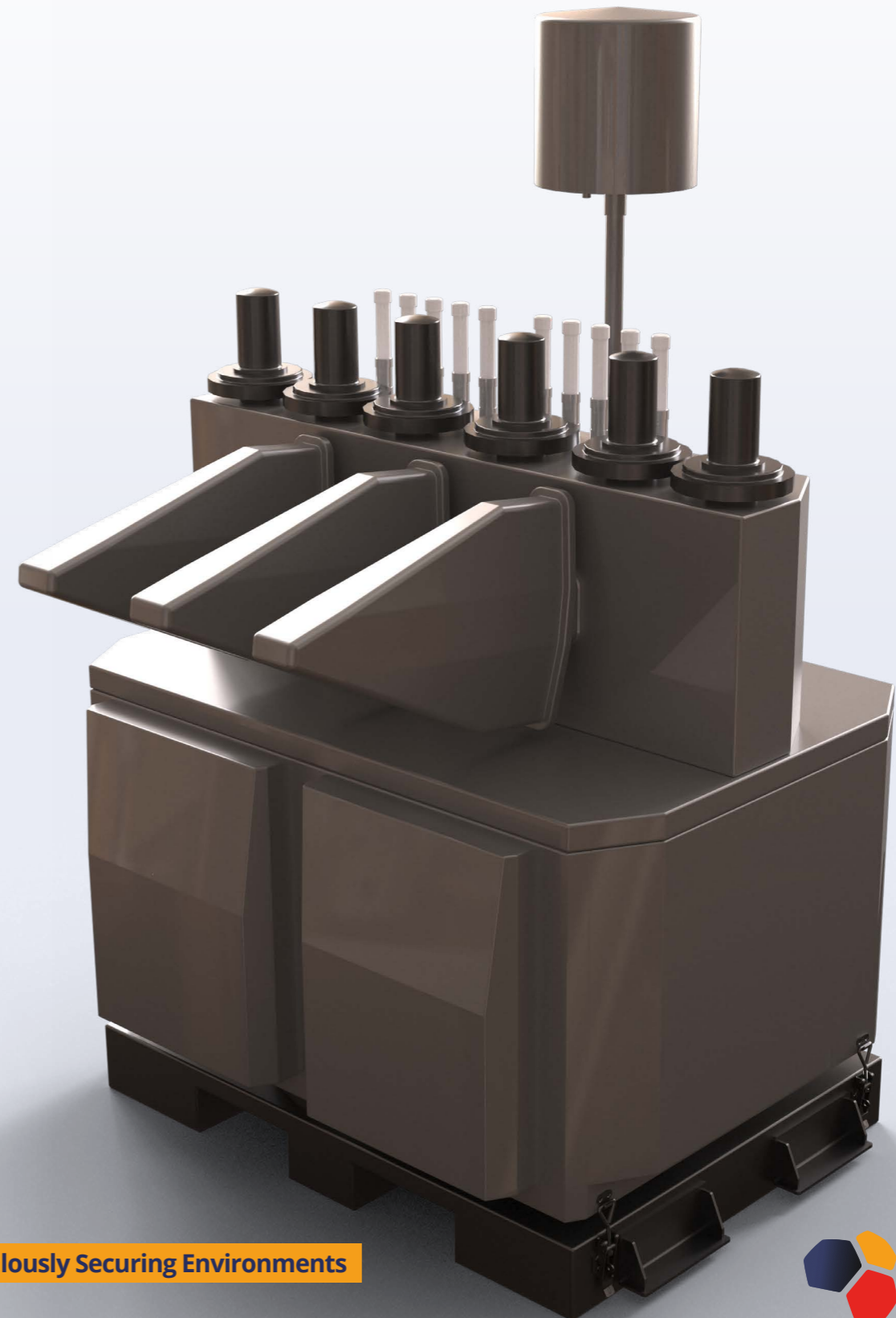
✈ Sint-Truiden N 50°47'20" E 05°12'06"

SCUTO

Drone detection & neutralization system

Operating stand-alone or interconnected in automatic or manual modes, using passive detection (RF) combined with active jamming- and spoofing capabilities.

The SCUTO is a robust and powerful C-UAS system, closing the 'targeting loop' as one single integrated system, that detects, identifies, tracks, neutralizes and reports.



ZSE Technology NV
Lichtenberglaan 1090 / box 208
3800 Sint-Truiden (Belgium)
www.zse.be - info@zse.be

Zealously Securing Environments



SCUTO

Drone detection & neutralization system



Omni-directional and directional RF, DF and protocol based detection between 400-6000 MHz on 10 channels up to 10 km

Omni-directional and directional jamming and spoofing between 400-8000 MHz on 13 channels up to 20 km (all existing GNSS)

Up to 30 threats

User interface (C²)

Electronic and power unit of the system
Main power 220 VAC, UPS power 270 Ah

Power output adjustable up to 650 Watt

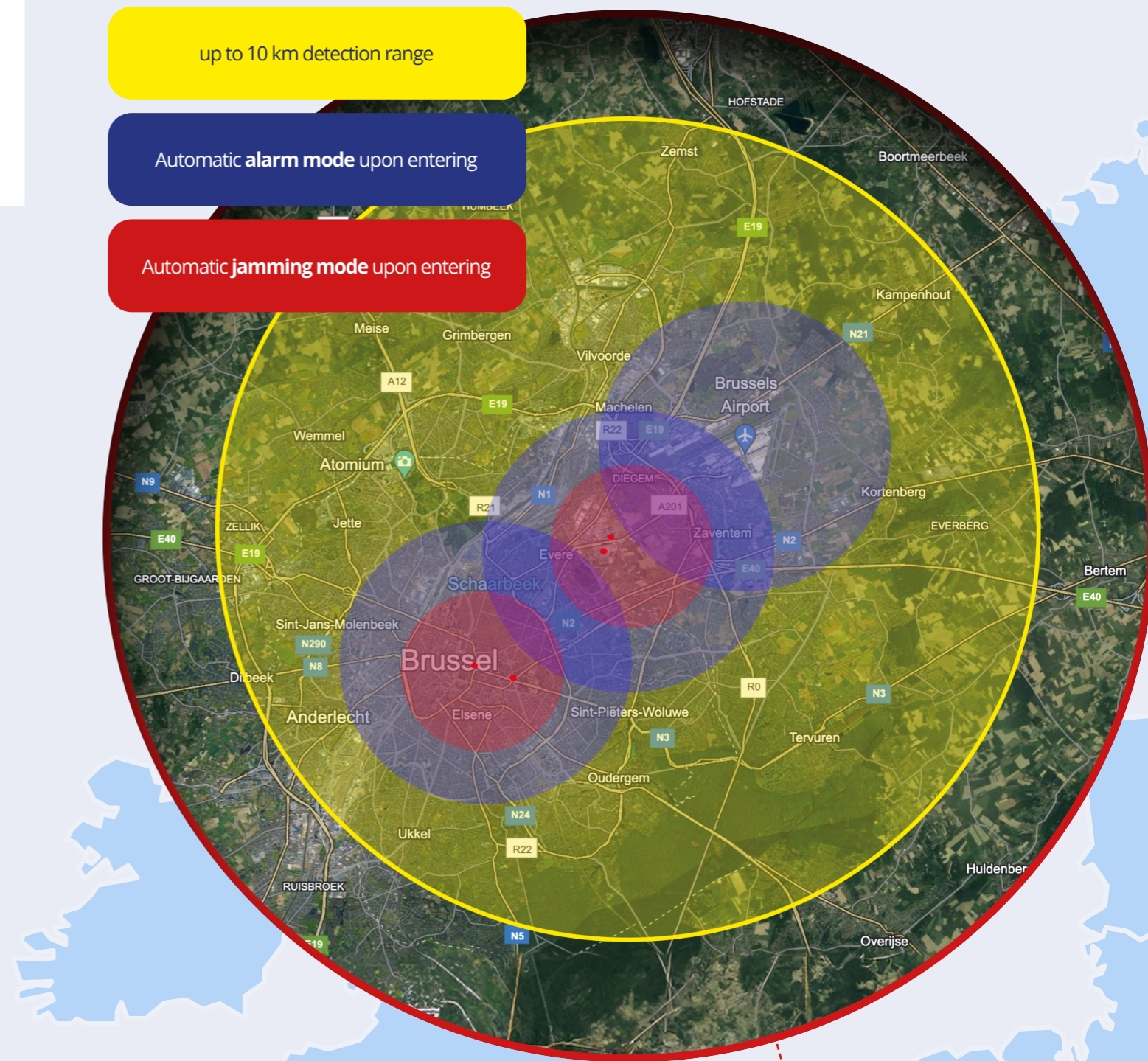
Dimensions
1400 x 2650 x 1050mm

Optional:
ADS-B, Flarm, Remote ID,

up to 10 km detection range

Automatic **alarm mode** upon entering

Automatic **jamming mode** upon entering



ZSE Technology NV
Lichtenberglaan 1090 / box 208
3800 Sint-Truiden (Belgium)
www.zse.be - info@zse.be

Zealously Securing Environments